



ChromPix2®

GC Modularity Reinvented



Modular Multi-Gas Analyzer for industrial and laboratory use.

Based on APIX Analytics patented miniaturization technology,
Chrompix2® is the first truly Plug&Play GC.

It now features unmatched flexibility with up to 4 different
analytical columns, up to 4 different carrier gases and the ability
to analyse simultaneously 4 different samples.



THE FIRST TRULY PLUG AND PLAY GC

- Electronic and Fluidic Plug and Play
- Up to 4 samples
- Up to 4 carrier gases
- Up to 4 Analytical Columns

BENEFITS OF USING OUR ANALYTICAL MODULES

FLEXIBILITY

- 1 heated sample line
- 1 to 4 simultaneous samples
- 1 to 4 carrier gases



RELIABILITY

- Guard column with backflush
- Best in class TCD Detector



SPEED

- Separation of complex gas mixtures in less than 1 minute
- Fast cycle time with isothermal operation



REDUCED COST

- Easy Maintenance : add or replace a module within a minute
- No need service from a GC expert
- Extremely low gas consumption

APPLICATIONS

BIOMETHANE

- Methanisation process
- Energy content
- Injection to the distribution grid
- Odorization control
- Control of impurities (sulfur compounds)

INDUSTRIAL EMISSIONS AND VOCS

- Outdoor air quality
- Indoor air quality
- VOCS
- BTEX

REFINERY GASES

- Fuel gas composition
- Flare gas monitoring
- CO₂ emission

NATURAL GAS

- Quality
- Energy content
- Custody transfer
- Odorization control

INDUSTRIAL AND SPECIALTY GASES

- Purity
- Quality



contact@apixanalytics.com

Mini parc Polytec - Immeuble Tramontane • 60 rue des Berges 38000 Grenoble

CHARACTERISTICS



- > Dimensions : 450x460x220mm (19' 4U)
- > Weight : 10kg
- > Input : 100-240V AC, 50-60 Hz



- > Power : 150W depending on configuration
- > Carrier gas consumption : up to 20mL/min per module
- > Sample gas consumption : up to 5mL/min per module

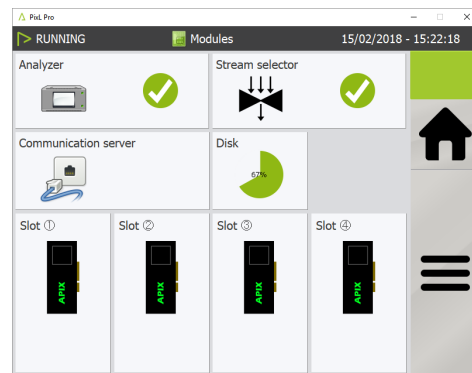
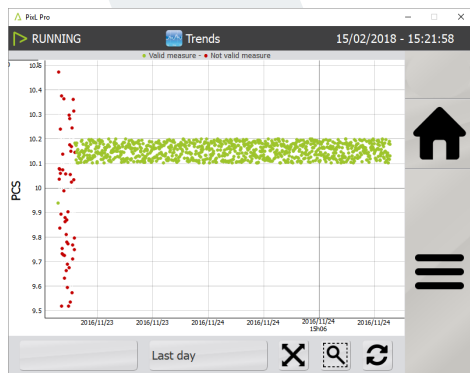
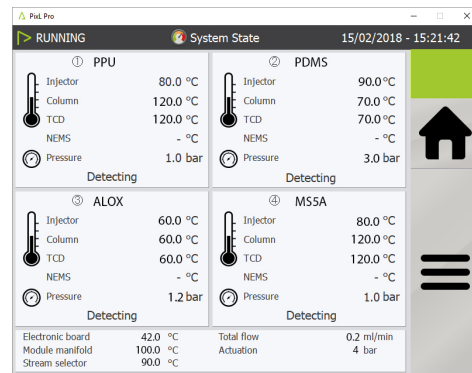
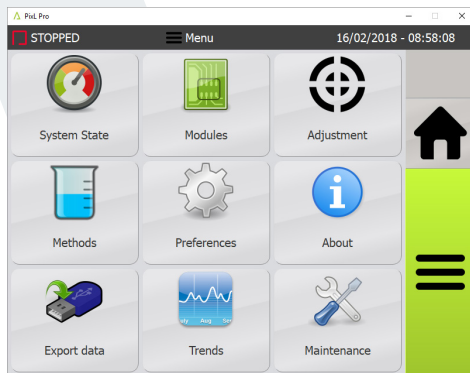


- > Up to 4 carrier gases (He, H₂, N₂, Ar...)
- > Carrier gas pressure : 4 bar
- > Sample Gas pressure : 0.3 bar



- > Up to 4 analytical modules
- > Operating temperature range : -10 to 40°C
- > Noise emission : 45dB

SOFTWARE



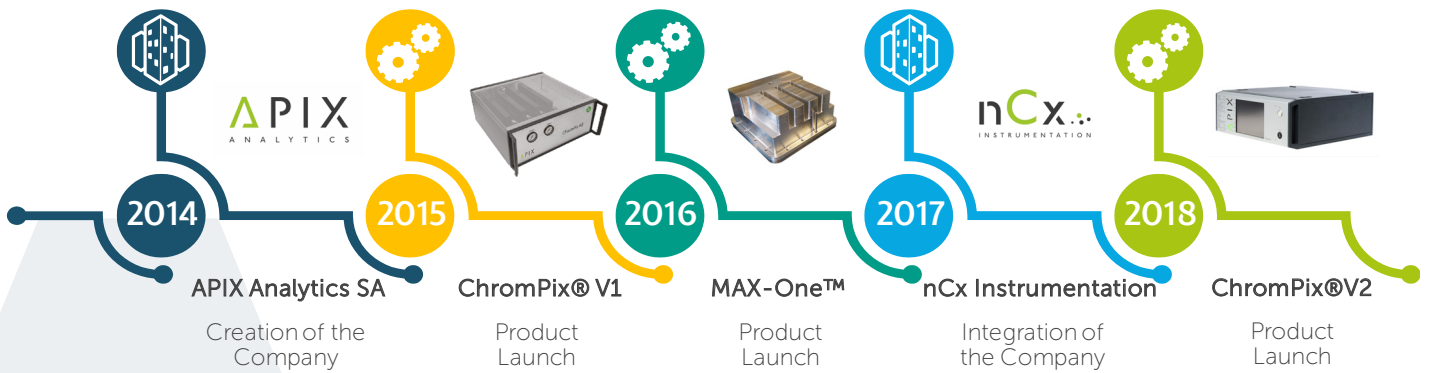
Full control and compliant with APIX process software : PixL^{Pro}
 Also available with the laboratory software : PixL^{Lab}

contact@apixanalytics.com

Mini parc Polytec - Immeuble Tramontane • 60 rue des Berges 38000 Grenoble

ABOUT APIX ANALYTICS

APIX Analytics (SA), a startup incorporated in June 2014, is the commercial emanation of 8 years of collaborative research between CEA (France) and California Institute of Technology (Caltech, USA). APIX is focused on the development of highly miniaturized multigas analyzers systems based on integration on silicon of traditional analytical chains: sampling, injection of gases, separation of complex gas mixtures to enhance specificity and then detection, identification and quantification of each mixture compound.



LOCATIONS



USA

3875 Saddleback Rd
Park City, UT 84098
United States of America

Europe

APIX Analytics SA
60 rue des Berges
38000 Grenoble
FRANCE

nCx Instrumentation
ZAE Porte du Béarn
64330 Garlin
FRANCE

China

Room 212, Building 81,
No. 4 Gongti North Road
Chaoyang District
Beijing, P.R. China

contact@apixanalytics.com

Mini parc Polytec - Immeuble Tramontane • 60 rue des Berges 38000 Grenoble